

DELAWARE VITAL STATISTICS ANNUAL REPORT POPULATION, 2020

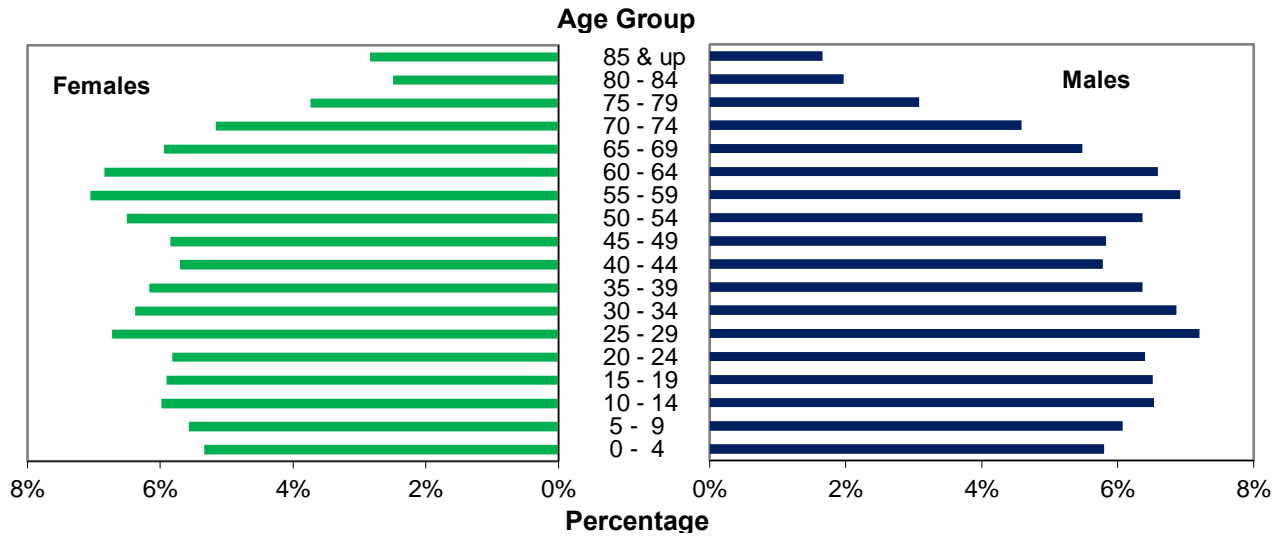


Suggested Citation:

Delaware Health Statistics Center. *Delaware Vital Statistics Annual Report, 2020*.
Delaware Department of Health and Social Services, Division of Public Health: 2023.

In 2020, nearly 51 percent of Delaware’s population was female. Females made up a greater proportion of the older age groups, which reflects the longer female life expectancy. Delaware females born in 2020 can expect to live an average of 80.5 years versus males who can expect to live 74.8 years.

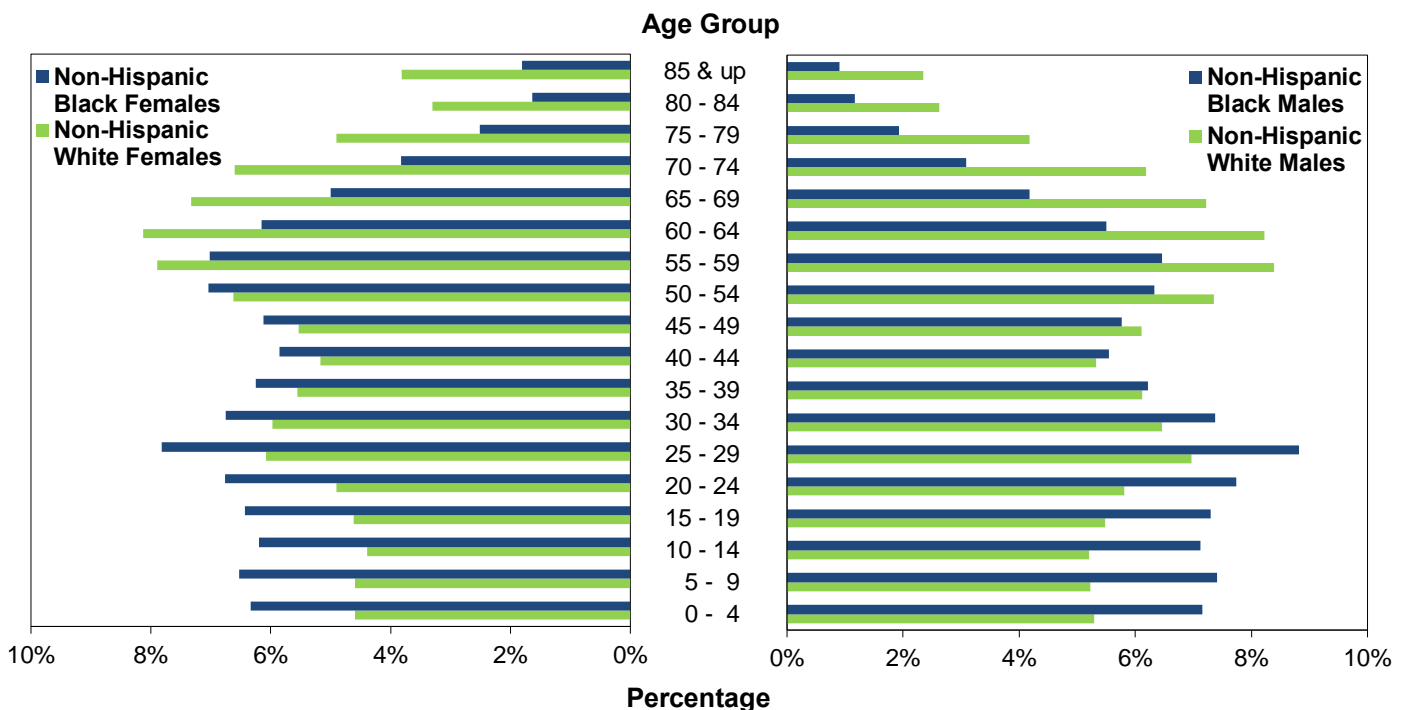
Figure 3. Population by Gender, Delaware, 2020



Source: Delaware Department of Social Services, Division of Public Health, Delaware Health Statistic Center

When the population was broken down by race, the highest proportion of females in the older age groups appeared in the non-Hispanic white population. However, non-Hispanic black females had a greater percentage of their population in the 0-54 year age range than non-Hispanic white females. In the 55 and above age range for both males and females, a greater proportion of the population was non-Hispanic white.

Figure 4. Non-Hispanic Population by Gender and Race, Delaware, 2020



Source: Delaware Department of Social Services, Division of Public Health, Delaware Health Statistic Center

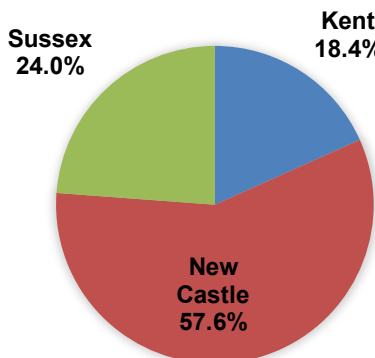
POPULATION

Delaware's three counties continued their increasing population trend, although they grew at different rates. Between 2000 and 2020, county populations grew annually by 2.2 percent for Kent, 0.7 percent for New Castle, and 2.6 percent for Sussex. Delaware's statewide increase was 1.3 percent.

In 2020, nearly half of Delaware's 65 and older population resided in New Castle County. However, residents 65 and older represented a much larger proportion of the Sussex County population, where one in four residents was 65 or older, versus New Castle and Kent counties, where approximately one in six residents was 65 or older.

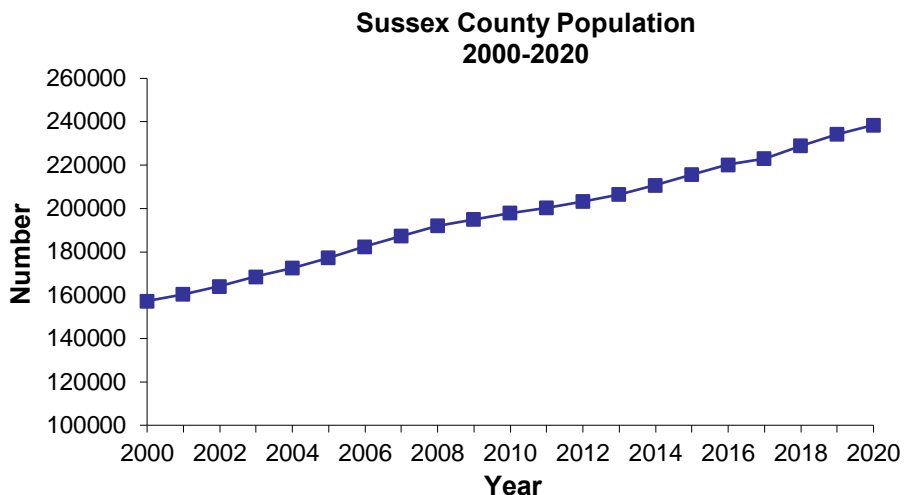
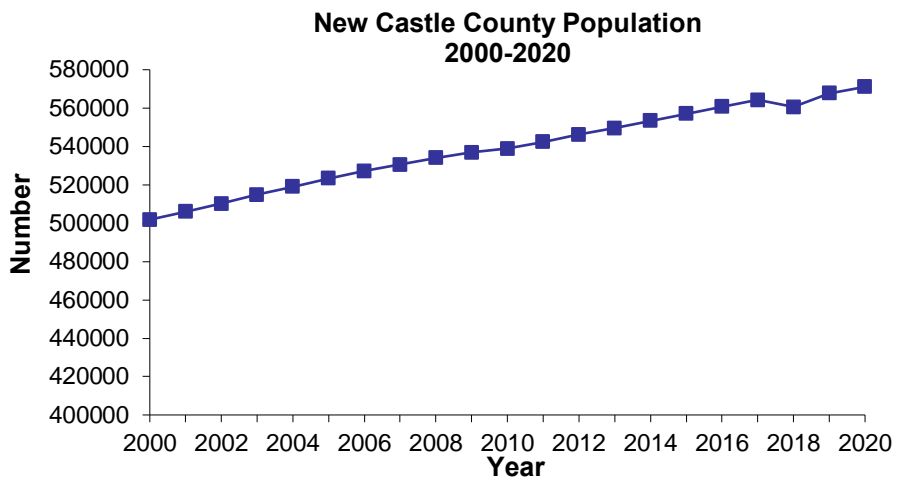
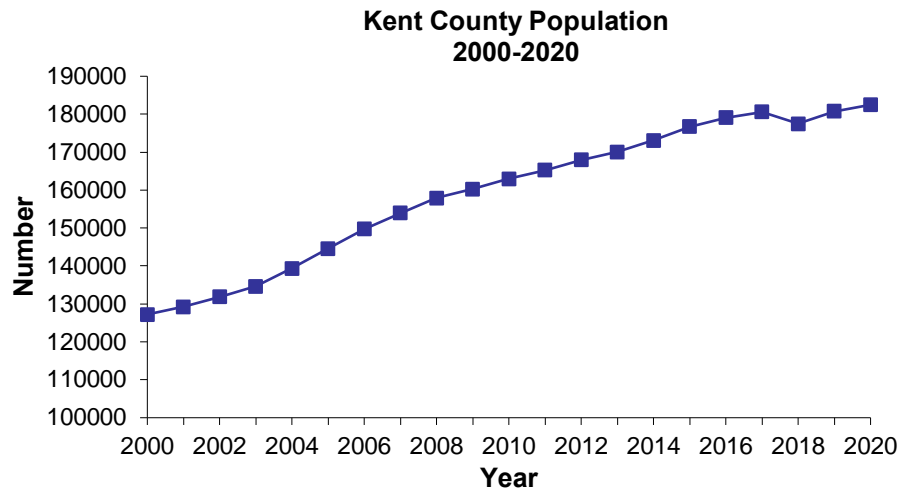
Over half of Delaware's total population resides in New Castle County, 57%.

Figure 6. Percent of Population by County, Delaware, 2020



Source: Delaware Department of Health and Social Services, Division of Public Health, Delaware Health Statistics Center

Figure 5. Resident Population by County, Delaware, 2000-2020



Source: Delaware Department of Health and Social Services, Division of Public Health, Delaware Health Statistics Center

TABLE A-1. PERCENT CHANGE IN POPULATION BY SEX, COUNTY, CITY OF DOVER, CITY OF NEWARK, AND CITY OF WILMINGTON, DELAWARE, 1970-2020

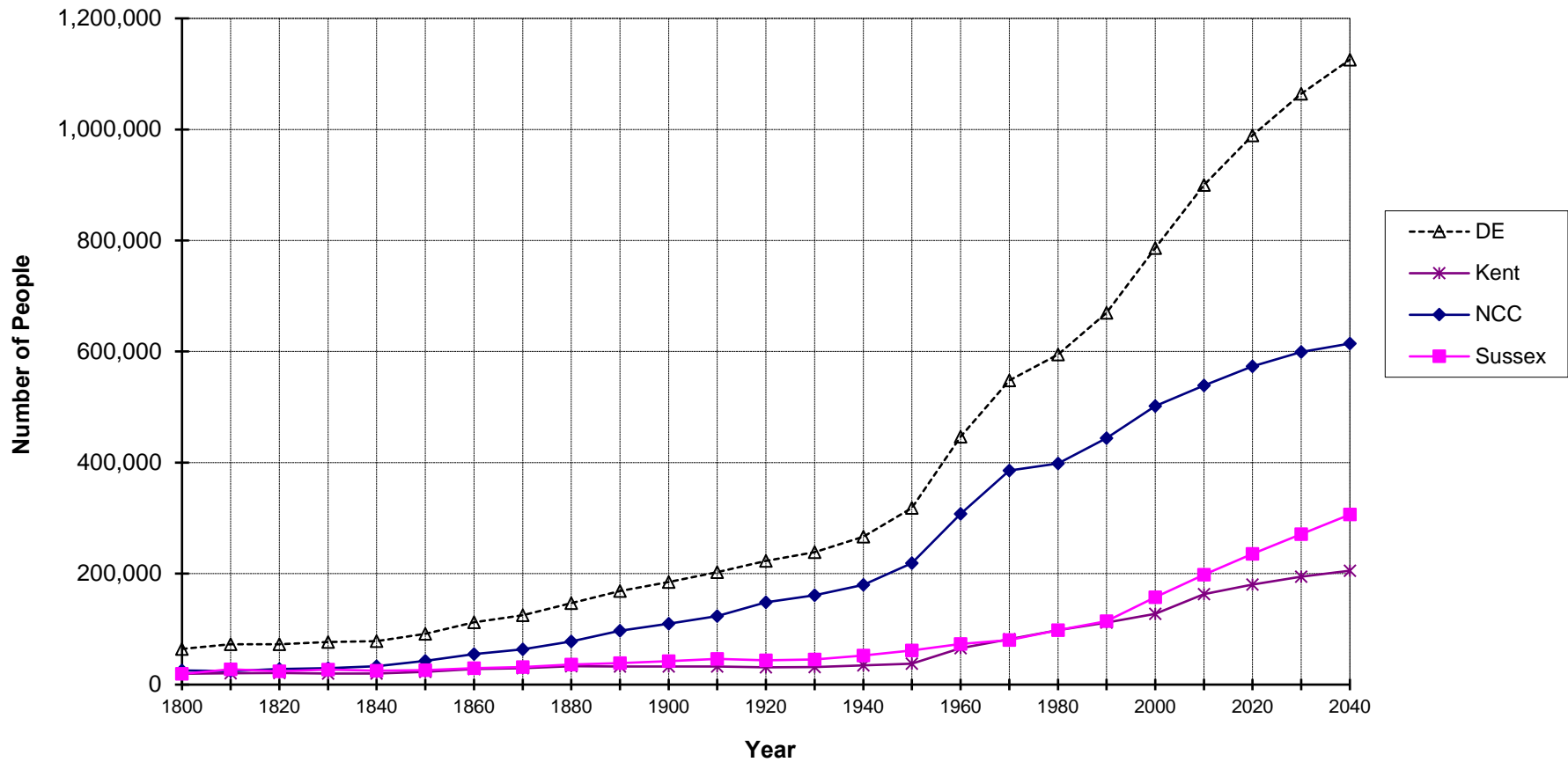
Area/ Sex	1970	1980	% Change 1970-1980	1990	% Change 1980-1990	2000	% Change 1990-2000	2010	% Change 2000-2010	2020*	% Change 2010-2020	% Change 2000-2020
Delaware	548,104	594,338	8.4	666,168	12.1	786,393	18.0	899,600	14.4	992,035	10.3	26.2
Male	267,332	286,599	7.2	322,966	12.7	381,690	18.2	435,691	14.1	480,549	10.3	25.9
Female	280,772	307,739	9.6	343,202	11.5	404,703	17.9	463,909	14.6	511,486	10.3	26.4
Kent	81,892	98,219	19.9	110,993	13.0	127,230	14.6	162,955	28.1	182,481	12.0	43.4
Male	41,337	48,254	16.7	54,300	12.5	61,325	12.9	78,400	27.8	87,033	11.0	41.9
Female	40,555	49,965	23.2	56,693	13.5	65,905	16.2	84,555	28.3	95,448	12.9	44.8
Dover	17,488	23,512	34.4	27,630	17.5	32,135	16.3	35,894	11.7	39,491	10.0	22.9
Male	8,319	11,695	40.6	13,408	14.6	15,114	12.7	16,667	10.3	18,353	10.1	21.4
Female	9,169	11,817	28.9	14,222	20.4	17,021	19.7	19,227	13.0	21,138	9.9	24.2
New Castle	385,856	398,115	3.2	441,946	11.0	501,846	13.6	538,753	7.4	571,058	6.0	13.8
Male	187,124	191,176	2.2	213,869	11.9	243,587	13.9	260,629	7.0	277,197	6.4	13.8
Female	198,732	206,939	4.1	228,077	10.2	258,259	13.2	278,124	7.7	293,861	5.7	13.8
Newark	20,757	25,247	21.6	26,463	4.8	28,457	7.5	31,468	10.6	34,035	8.2	19.6
Male	10,242	11,993	17.1	12,408	3.5	13,085	5.5	14,689	12.3	15,928	8.4	21.7
Female	10,515	13,254	26.0	14,055	6.0	15,372	9.4	16,779	9.2	18,107	7.9	17.8
Wilmington	80,386	70,195	-12.7	71,529	1.9	72,730	1.7	71,454	-1.8	70,903	-0.8	-2.5
Male	36,968	31,458	-14.9	33,249	5.7	34,759	4.5	33,997	-2.2	33,912	-0.3	-2.4
Female	43,418	38,737	-10.8	38,280	-1.2	37,971	-0.8	37,457	-1.4	36,991	-1.2	-2.6
Sussex	80,356	98,004	22.0	113,229	15.5	157,317	38.9	197,892	25.8	238,496	20.5	51.6
Male	38,871	47,169	21.3	54,797	16.2	76,778	40.1	96,662	25.9	116,319	20.3	51.5
Female	41,485	50,835	22.5	58,432	14.9	80,539	37.8	101,230	25.7	122,177	20.7	51.7

Note:

*Numbers for this year are projections.

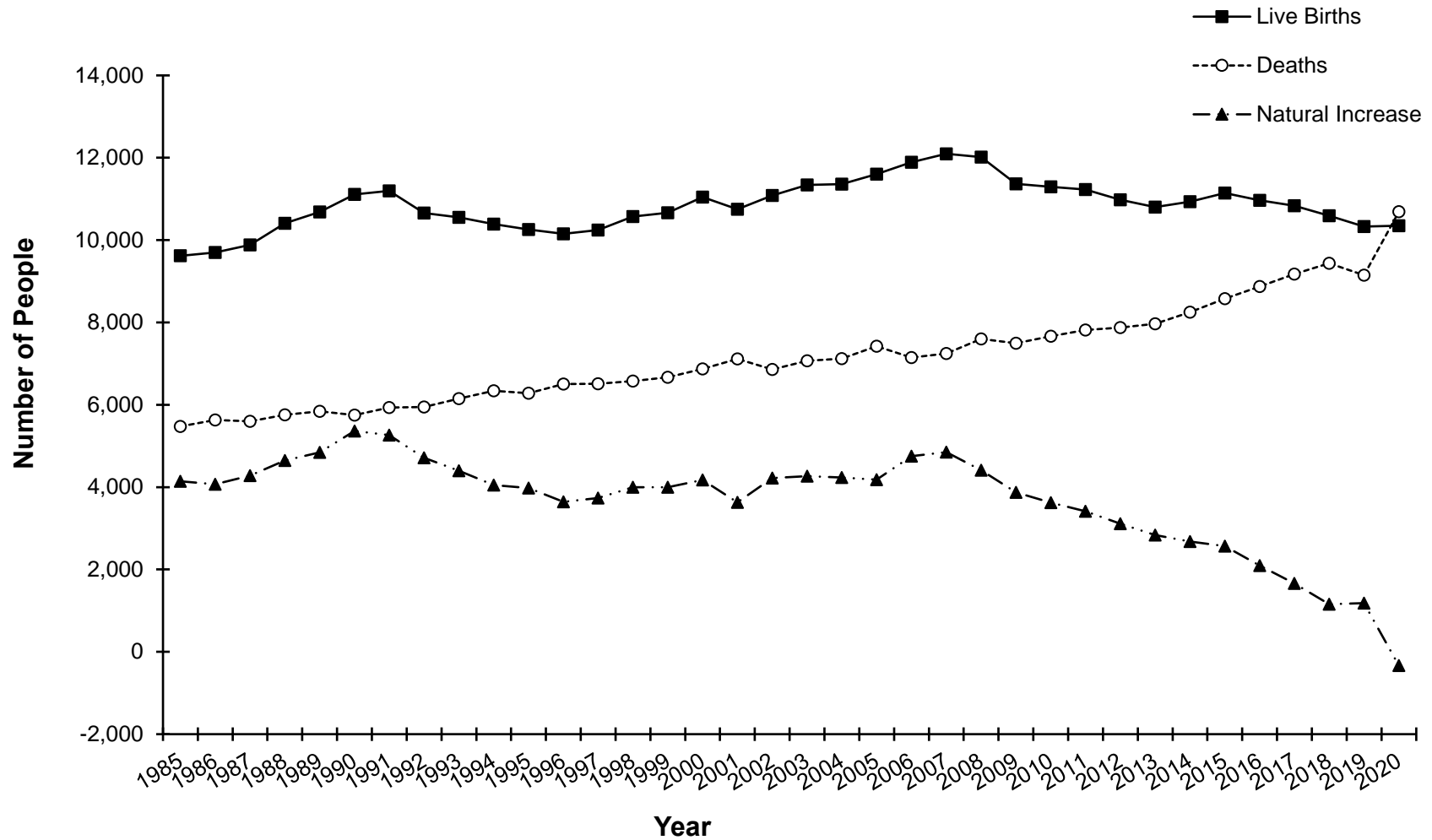
Sources: Delaware Department of Health and Social Services, Division of Public Health, Delaware Health Statistics Center, Delaware Population Consortium
U.S. Bureau of the Census

Figure A-1. Population Growth, Delaware and Counties, 1800-2040



Sources: Delaware Department of Health and Social Services, Division of Public Health, Delaware Health Statistics Center
 Delaware Population Consortium

Figure A-2. Live Births, Deaths, and Natural Increase, Delaware, 1985-2020



Source: Delaware Department of Health and Social Services, Division of Public Health, Delaware Health Statistics Center

TABLE A-2. POPULATION ESTIMATES BY SEX, RACE AND AGE, COUNTY, CITY OF DOVER, CITY OF NEWARK, AND CITY OF WILMINGTON, DELAWARE, 2020

Area/ Sex/Race	Age																		
	Total	0-4	5-9	10-14	15-19	20-24	25-29	30-34	35-39	40-44	45-49	50-54	55-59	60-64	65-69	70-74	75-79	80-84	85+
Delaware	982,746	55,126	57,115	59,885	59,451	59,746	70,394	62,697	60,948	54,471	59,235	65,603	70,023	66,165	57,124	47,523	33,143	21,545	22,552
Male	476,098	27,845	29,025	30,331	30,287	30,456	35,076	31,757	30,038	26,435	28,639	31,611	33,562	31,281	26,465	21,636	14,561	9,134	7,959
Non-Hispanic White	293,199	14,845	14,654	14,606	15,379	16,282	19,535	18,129	17,160	14,929	17,147	20,634	23,528	23,081	20,264	17,354	11,723	7,356	6,593
Non-Hispanic Black	102,908	7,441	7,672	7,354	7,711	8,093	9,165	7,221	6,427	5,526	6,208	6,800	6,536	5,503	4,270	3,004	1,930	1,162	885
Female	506,648	27,281	28,090	29,554	29,554	29,164	29,290	35,318	30,940	30,910	28,036	30,596	33,992	36,461	34,884	30,659	25,887	18,582	12,411
Non-Hispanic White	313,018	14,551	14,129	13,957	14,631	15,609	20,223	17,699	17,359	15,794	18,102	21,474	25,027	25,112	22,874	20,090	14,662	9,873	11,852
Non-Hispanic Black	114,365	7,320	7,429	7,216	7,495	7,877	9,002	7,459	7,230	6,536	7,363	8,259	7,962	6,904	5,664	4,115	2,746	1,767	2,021
Kent	180,779	11,222	11,523	12,120	12,186	11,822	14,092	12,250	11,027	9,888	10,631	11,669	11,964	10,792	9,058	7,842	5,586	3,709	3,398
Male	86,535	5,614	5,813	6,103	6,170	6,071	6,943	6,169	5,262	4,538	4,996	5,531	5,726	4,969	4,102	3,510	2,389	1,493	1,136
Non-Hispanic White	52,956	3,303	3,225	3,185	3,331	3,320	3,468	3,614	3,260	2,840	3,213	3,633	3,866	3,464	2,887	2,604	1,791	1,089	863
Non-Hispanic Black	22,097	1,553	1,627	1,609	1,671	1,707	2,510	1,637	1,176	994	1,203	1,356	1,352	1,110	911	708	466	298	209
Female	94,244	5,608	5,710	6,017	6,016	5,751	7,149	6,081	5,765	5,350	5,635	6,138	6,238	5,823	4,956	4,332	3,197	2,216	2,262
Non-Hispanic White	56,213	3,305	3,183	2,956	3,109	3,005	3,273	3,517	3,435	3,186	3,404	3,847	4,140	3,858	3,366	3,087	2,270	1,628	1,644
Non-Hispanic Black	24,867	1,560	1,566	1,626	1,614	1,679	2,837	1,692	1,448	1,303	1,459	1,577	1,487	1,416	1,198	899	644	422	440
New Castle	567,741	32,330	33,523	35,278	35,503	36,129	44,711	38,243	37,649	33,568	36,005	38,650	39,791	36,604	30,281	22,978	15,172	9,935	11,391
Male	275,521	16,356	17,068	17,829	18,137	18,531	22,137	19,374	18,516	16,496	17,489	18,625	19,000	17,348	13,972	10,311	6,464	4,055	3,813
Non-Hispanic White	155,135	8,002	7,960	7,840	8,473	9,108	12,127	10,541	9,800	8,459	9,539	11,088	12,275	11,860	9,896	7,557	4,693	2,964	2,953
Non-Hispanic Black	67,568	4,780	4,983	4,741	5,077	5,423	5,649	4,676	4,419	3,878	4,306	4,605	4,351	3,620	2,761	1,892	1,166	706	535
Female	292,220	15,974	16,455	17,449	17,366	17,598	22,574	18,869	19,133	17,072	18,516	20,025	20,791	19,256	16,309	12,667	8,708	5,880	7,578
Non-Hispanic White	165,398	7,814	7,575	7,680	8,090	8,755	13,118	10,164	9,872	8,695	9,862	11,474	13,039	12,723	11,167	8,910	6,290	4,273	5,897
Non-Hispanic Black	75,395	4,683	4,865	4,631	4,954	5,210	5,256	4,865	4,928	4,512	5,139	5,725	5,448	4,647	3,730	2,672	1,710	1,135	1,285
Wilmington*	70,161	4,968	5,138	4,656	4,354	4,053	4,427	5,002	6,069	4,761	4,315	4,200	4,462	4,080	3,306	2,403	1,611	1,090	1,266
Male	33,572	2,480	2,545	2,331	2,222	2,033	2,254	2,480	2,940	2,360	2,099	1,976	2,087	1,896	1,508	1,017	618	391	335
Non-Hispanic White	10,031	424	511	383	289	266	304	810	1,263	1,016	807	714	720	727	643	500	313	168	173
Non-Hispanic Black	17,897	1,482	1,454	1,415	1,431	1,395	1,550	1,263	1,141	977	980	990	1,142	992	715	422	252	177	119
Female	36,589	2,488	2,593	2,325	2,132	2,020	2,173	2,522	3,129	2,401	2,216	2,224	2,375	2,184	1,798	1,386	993	699	931
Non-Hispanic White	10,076	424	517	378	298	273	285	801	1,231	810	690	571	662	678	675	598	423	272	490
Non-Hispanic Black	20,907	1,501	1,505	1,427	1,367	1,370	1,532	1,323	1,408	1,202	1,228	1,357	1,485	1,308	975	686	494	366	373
Sussex	234,226	11,574	12,069	12,487	11,762	11,795	11,591	12,204	12,272	11,015	12,599	15,284	18,268	18,769	17,785	16,703	12,385	7,901	7,763
Male	114,042	5,875	6,144	6,399	5,980	5,854	5,996	6,214	6,260	5,401	6,154	7,455	8,836	8,964	8,391	7,960	7,840	8,473	9,108
Non-Hispanic White	85,108	3,540	3,469	3,581	3,575	3,854	3,940	3,974	4,100	3,630	4,395	5,913	7,387	7,757	7,481	7,193	5,239	3,303	2,777
Non-Hispanic Black	13,243	1,108	1,062	1,004	963	963	1,006	908	832	654	699	839	833	773	598	404	298	158	141
Female	120,184	5,699	5,925	6,088	5,782	5,941	5,595	5,990	6,012	5,614	6,445	7,829	9,432	9,805	9,394	8,888	6,677	4,315	4,753
Non-Hispanic White	91,407	3,432	3,371	3,321	3,432	3,849	3,832	4,018	4,052	3,913	4,836	6,153	7,848	8,531	8,341	8,093	6,102	3,972	4,311
Non-Hispanic Black	14,103	1,077	998	959	927	988	909	902	854	721	765	957	1,027	841	736	544	392	210	296

Sources:
 Delaware Department of Health and Social Services, Division of Public Health, Delaware Health Statistics Center
 Delaware Population Consortium